

SURFACE RESTORATION IN ACCORDANCE WITH LOCAL JURISDICTIONAL REQUIREMENTS.
 MINIMUM REQUIREMENTS SHOWN IN TRENCH PAVEMENT & SURFACE RESTORATION DETAIL
 NO. 8.

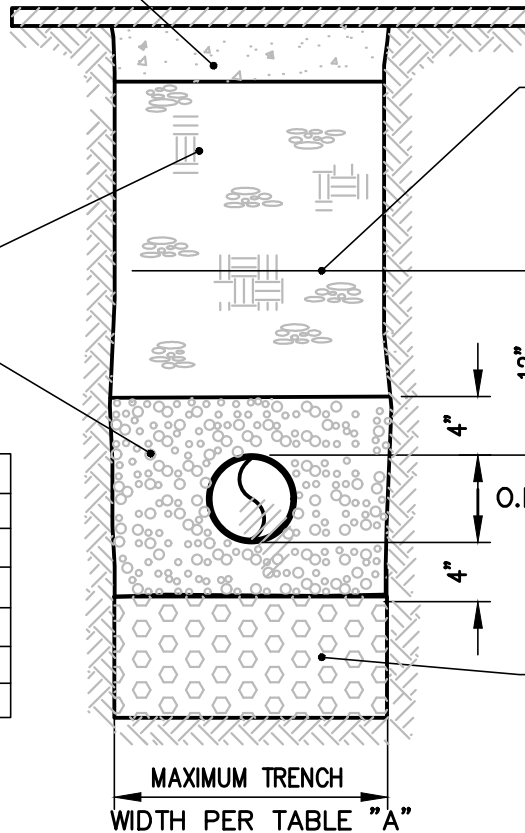
6.5" OF 5/8" CRUSHED GRAVEL (MIN.) REQUIRED
 IN HARD SURFACED AREAS. COMPACT TO 95%
 MAX. DENSITY. LOCAL JURISDICTIONAL
 REQUIREMENTS SHALL OVERRIDE.

SELECT NATIVE MATERIAL OR
 IMPORTED GRAVEL. COMPACT
 TO MIN. 95% MAX. DENSITY.
 SEE SPECIFICATIONS. SEE
 NOTE 1.

BEDDING GRAVEL

TABLE "A"

6" PIPE	2'-6"
8" PIPE	2'-6"
10" PIPE	3'-0"
12" PIPE	3'-0"
15",16" PIPE	3'-6"
18" PIPE	4'-0"
24" PIPE	4'-0"



SPECIAL PRECAUTIONS SHALL BE
 TAKEN TO PROTECT PIPE TO
 THIS LEVEL. SEE SPECIFICATIONS
 FOR MAXIMUM PARTICLE SIZE.

O.D. OF WATER MAIN

FOUNDATION GRAVEL (PER
 SPECIFICATIONS) AS REQUIRED
 BY THE ENGINEER

NOTES:

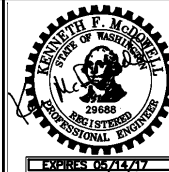
TRENCH SECTION

1. LOCAL JURISDICTIONAL REQUIREMENTS OVERRIDE ALL APPLICABLE SECTIONS OF THIS DETAIL. WHEN WORKING IN A STREET R/W PLEASE REFER TO ALL LOCAL JURISDICTIONAL REQUIREMENTS FOR TRENCH EXCAVATION AND BACKFILL.
2. FILL AREAS SHALL BE FILLED AND COMPACTED PRIOR TO INSTALLATION OF WATER MAINS. 95% COMPACTION PER ASTM D-1557 REQUIRED IN FILL AREAS. REPORTS REQUIRED PRIOR TO TRENCHING.
3. BEDDING REQUIRED ONLY IF DIRECTED BY THE DISTRICT DUE TO NATIVE SOIL CONDITIONS. BEDDING SHALL BE 5/8" CRUSHED SURFACING.
4. PUMPING SOILS SHALL BE REMOVED FROM THE TRENCH BACKFILL IMMEDIATELY.
5. USE OF NATIVE SOILS FOR BACKFILL REQUIRES PROCTOR SAMPLES BE TAKEN PRIOR TO EXCAVATION. COMPACTION TESTS SUBMITTED DAILY ON NATIVE AND IMPORTED BACKFILL. BACKFILL SHALL BE REMOVED AND RECOMPACTED OR REPLACED UNTIL PASSING TEST RESULTS ARE OBTAINED.



**Woodinville
 Water District**

**TYPICAL
 LONGITUDINAL
 TRENCH SECTION**



WATER STD.
 PLAN NO. (7)

REVISION DATE
 12-11