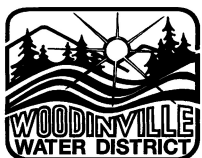


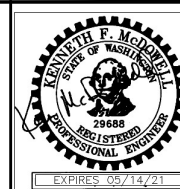
NOTES:

1. IT SHALL BE THE OWNER'S RESPONSIBILITY TO INSURE THAT THE SERVICE LINES AND METER SIZES ARE ADEQUATE TO SERVE THE DOMESTIC & FIRE SPRINKLER OR IRRIGATION SYSTEMS. REFER TO LARGER METER AND BACKFLOW DEVICE DETAILS FOR SYSTEMS REQUIRING PIPE AND METER LARGER THAN 1".
2. AFTER PROJECT ACCEPTANCE AND METER SET FEES HAVE BEEN PAID, THE METERS WILL BE INSTALLED BY THE DISTRICT.
3. INSTALL DOMESTIC & FIRE SPRINKLER SERVICE IN ACCORDANCE WITH STANDARD PLAN 13 (SINGLE FAMILY DOMESTIC SERVICE). BACK OF METER BOX SHALL BE PLACED AT THE RIGHT OF WAY LINE OR IN THE UTILITY EASEMENT AS SHOWN.
4. THE BACKFLOW PREVENTION DEVICE SHALL BE A DOUBLE CHECK VALVE ASSEMBLY AS APPROVED BY THE WASHINGTON STATE DEPARTMENT OF HEALTH. MIN. SIZE OF BACKFLOW DEVICE SHALL BE 1" OR MATCH METER SIZE.
5. NO CHEMICALS ARE ALLOWED IN THE FIRE SPRINKLER PIPING SYSTEM.
6. THE BACKFLOW PREVENTION ASSEMBLY SHALL BE INSTALLED BY THE OWNER. SEE STANDARD PLAN NO. 21. THE DEVICE SHALL BE INSPECTED AND INITIALLY TESTED BY THE DISTRICT PRIOR TO ESTABLISHING WATER SERVICE. THE BACKFLOW DEVICE SHALL NOT BE INSTALLED IN A BUILDING.
7. FIRE SPRINKLER SYSTEMS SHALL BE DESIGNED IN ACCORDANCE WITH THE LOCAL FIRE MARSHAL'S REQUIREMENTS AND HAVE FIRE MARSHAL APPROVAL.
8. NO METER OR DCVA BOXES ALLOWED IN DRIVEWAYS OR HARD SURFACE AREAS.
9. INSPECTION REQUIRED ON FIRE SERVICE AND BACKFLOW ASSEMBLY PRIOR TO BACKFILL. CALL 425-487-4100 TO SCHEDULE.



**Woodinville
Water District**

**1" SINGLE FAMILY
DOMESTIC AND FIRE
SERVICE CONNECTIONS**



**WATER STD.
PLAN NO. 14**

**REVISION DATE
12-20**