

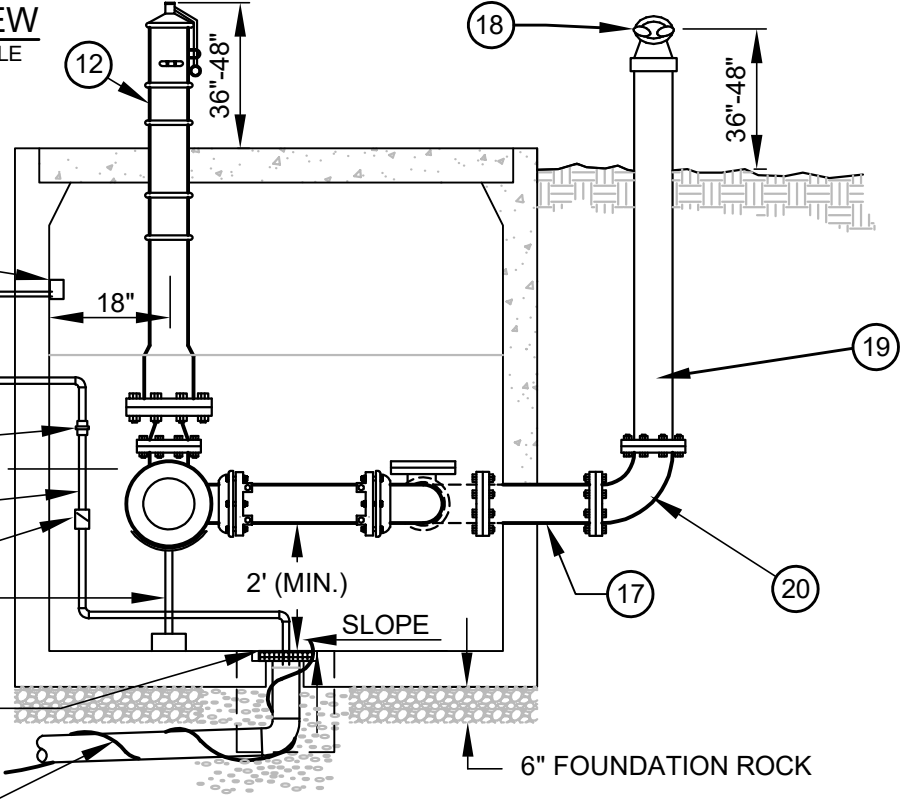
PLAN VIEW
NOT TO SCALE

IF SUMP PUMP IS NECESSARY-INSTALL WEATHERPROOF GFCI OUTLET INSIDE VAULT (OWNER TO PROVIDE ELECTRICAL SERVICE)

TERMINATE SUMP PUMP PIPING IN CATCH BASIN

- 1 1/2" PVC UNION
- 1 1/2" SCHEDULE 40 PVC
- 1 1/2" PVC SINGLE CHECK

4" SCH. 40 PVC W/ 12GA. (EXTEND INTO VAULT) TRACER WIRE. 2% MIN. SLOPE. PROVIDE SUMP PUMP IF GRAVITY DRAIN NOT FEASIBLE

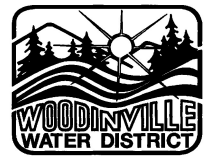


END VIEW
NOT TO SCALE

SEE STD. PLAN NO. 25A FOR MATERIAL LIST AND NOTES.

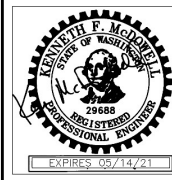
NOTES:

1. DESIGN FOR 4" THRU 10" DOUBLE DETECTOR CHECK VALVE



Woodinville
Water District

FIRE SPRINKLER
SERVICE CONNECTION



WATER STD.
PLAN NO. 25

REVISION DATE
12-20