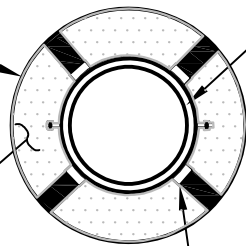


MIN. .375 INCH STEEL CASING CONTINUOUSLY WELDED AT JOINTS. DIAMETER ON DRAWINGS.

FILL ALL VOIDS WITH SAND. SEE NOTE 2.



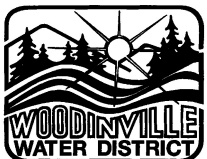
RESTRAINED JOINT DUCTILE IRON WATER MAIN

CENTERED AND RESTRAINT TYPE CASING SPACER

MIN. CASING DIAMETER	
PIPE DIA.	CASING DIA.
6"	12"
8"	15"
10"	18"
12"	20"
15"	24"
>15"	AS SPECIFIED

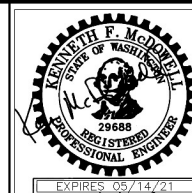
NOTES:

1. RESTRAINED JOINT DUCTILE IRON CL 52 REQUIRED IN CASINGS. SIZE CASING TO ACCOMODATE THE RESTRAINED JOINT PIPE.
2. THE INTERSTITIAL SPACE BETWEEN THE PIPE AND CASING SHALL BE COMPLETELY FILLED WITH DRY SAND AFTER PRESSURE AND PURITY TESTS HAVE PASSED. METHOD OF FILLING SAND SHALL BE APPROVED BY THE DISTRICT.
3. CASING LOCATIONS SHALL BE AS SHOWN ON THE PLANS OR IDENTIFIED IN THE FIELD.
4. MAXIMUM SPACING BETWEEN CASING SPACERS IS 6' O.C. END CASING SPACER MAX. 1' FROM END OF CASING PIPE.
5. CASING SPACER SHALL BE CENTERED RESTRAINT TYPE.
6. CASING SPACERS SHALL BE MANUFACTURED BY ADVANCED PRODUCTS & SYSTEMS MODEL SSI, CASCADE WATERWORKS MFG. MODEL CCS, OR DISTRICT APPROVED EQUAL.
7. ONE CASING SPACER SHALL BE SET ON THE SPIGOT END OF EACH SEGMENT OF THE CARRIER PIPE. WHEN JOINT IS COMPLETE THE SPACER SHALL BE IN CONTACT WITH THE BELL OF THE JOINT.



**Woodinville
Water District**

**CASING DETAILS
AND REQUIREMENTS**



**WATER STD.
PLAN NO. (24)**

REVISION DATE
12-20