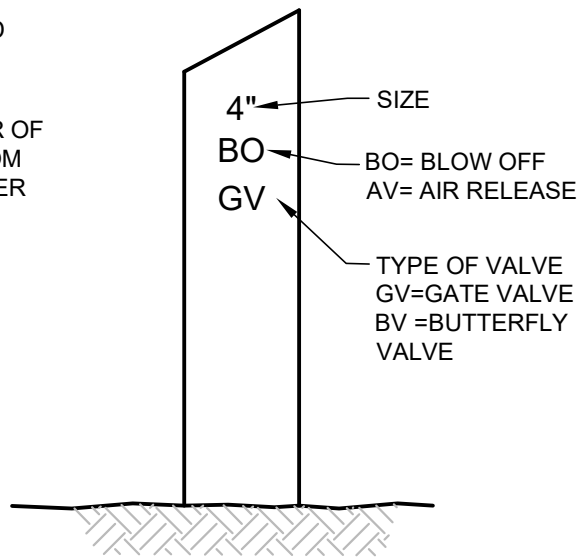
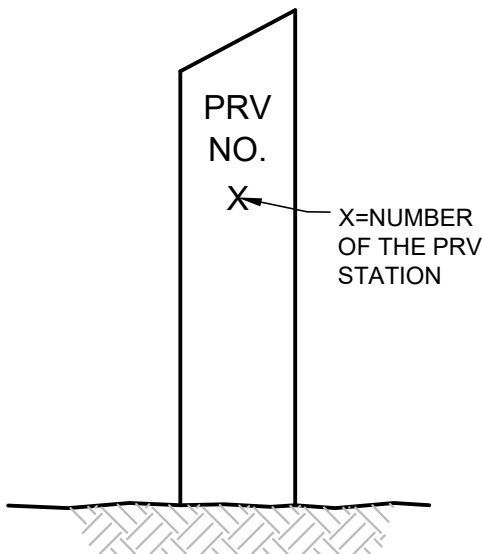


FRONT

VALVE MARKER POST

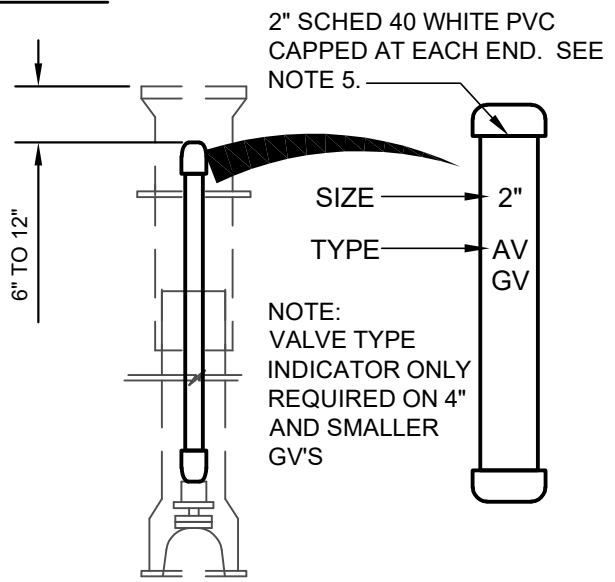


SIDE



SIDE

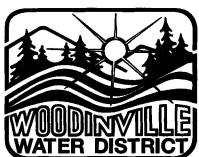
PRV STATION MARKER POST



VALVE SIZE AND TYPE INDICATOR

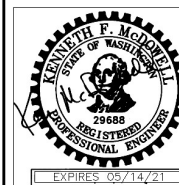
NOTES:

1. ALL MARKER POSTS TO BE PAINTED (2) COATS SHERWIN WILLIAMS INDUSTRIAL URETHANCE ALKYD B54Y157 SAFETY YELLOW.
2. 2" BLACK DIE CUT STICK ON LETTERS SHALL BE USED TO LETTER MARKERS. PAINTING STENCILS IS NOT ALLOWED.
3. LETTER THE SIDE OF BLOW-OFF, AIR RELEASE AND PRV MARKERS AS SHOWN. LETTER DISTANCE FROM BACK EDGE OF POST TO CENTER OF GATE VALVE BOX OR HATCH ON PRV.
4. CONSIDERATION SHALL BE GIVEN IN LOCATING VALVE MARKER TO SAFETY, AESTHETICS AND MAINTENANCE SURROUNDING AREA. WHENEVER POSSIBLE, LOCATE MARKER TO THE EVEN FOOT.
5. PLACE VALVE TYPE AND SIZE INDICATOR IN VALVE CHAMBER W/ 6" CLEARANCE AT TOP. USE WATERPROOF MARKER FOR NOTATIONS.



**Woodinville
Water District**

**VALVE
MARKER POSTS**



**WATER STD.
PLAN NO. 23**

**REVISION DATE
12-20**