

SIZE	MIN. VAULT SIZE (INSIDE)			OLDCASTLE CO. MODEL	OLDCASTLE COVER
	W	L	H		
3"	3'-8"	4'-8"	3'-3"	644-LA	64-2-332P
4"	3'-10"	5'-3"	3'-8"	575-LA	57TL-2-332P
6"	4'-0"	6'-6"	4'-5"	577-LA	57TL-20332P
8"	4'-5"	7'-8"	5'-3"	4484-LA	4484-TL2-332P
10"	4'-8"	8'-8"	6'-1"	5106-LA	5106-TL3-332

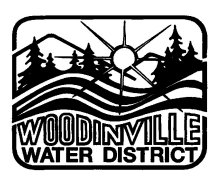
LEGEND

CONTRACTOR TO VERIFY VAULT SIZE IS ADEQUATE.

- ① ONE GALVANIZED STEEL LADDER TO BE SECURED TO VAULT.
- ② 4" SCHD 40 PVC DRAIN 2% MIN. SLOPE TO STORM BASIN. PROVIDE 12 GAUGE TRACE WIRE. SUMP PUMP REQUIRED IF DRAIN NOT FEASIBLE.
- ③ CLASS 52 DUCTILE IRON PIPE REQUIRED. SIZE AS REQUIRED (4" DIA. MIN.). FOR 3", PLACE REDUCER OUTSIDE OF VAULT. ALL PIPE AND FITTINGS SHALL BE RESTRAINED.
- ④ 2' x 2' x 8" THICK FORMED CONCRETE BLOCKING WITH LOCKING FOLLOWER RING.
- ⑤ PRECAST CONCRETE VAULT WITH A MINIMUM OF TWO, 3'x3' DIAMOND PLATE DOORS RATED FOR H2O LOADING. MARKED "WATER". VAULT SHALL BE EQUAL TO OLDCASTLE MODEL LISTED IN TABLE ABOVE.
- ⑥ TRAFFIC RATED NON-SHRINK GROUT SHALL BE USED IN ALL VAULT PENETRATIONS.
- ⑦ A MINIMUM OF 3" BETWEEN THE UNDERSIDE OF THE LID, OR VAULT, AT THE HIGHEST POINT OF VALVING AND ASSEMBLY IS REQUIRED.
- ⑧ THE DEVICE MUST BE EQUIPPED WITH (4) RESILIENT SEATED TEST COCKS WITH PLUGS INSTALLED.
- ⑨ THE DEVICE MUST ALSO BE EQUIPPED WITH (2) RESILIENT WEDGE O.S.&Y. SHUT OFF GATE VALVES WITH HAND WHEELS. GATE VALVES SHALL CONFORM TO AWWA C-509 OR C-515.
- ⑩ A MINIMUM OF A 12" CLEARANCE IS REQUIRED BETWEEN THE LOWEST POINT OF THE DEVICE AND TO THE BOTTOM OF THE VAULT.
- ⑪ TWO ADJUSTABLE PIPE STANCHIONS REQUIRED AND SIZED APPROPRIATELY.
- ⑫ EBBA IRON SERIES 2100 MEG-A-FLANGE
- ⑬ 3" OR 4" X 2" DOUBLE STRAP STAINLESS STEEL SADDLE, 2" CURB STOP W/ LOCKING WING FOR FLUSHING. PLACE CURB STOP ON ON BOTTOM OF PIPE.

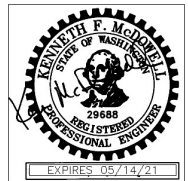
NOTES:

- 1. TEE AND GATE VALVE REQUIRED ON CONNECTION TO MAINLINE.
- 2. THE DCVA CHOSEN MUST BE ON THE MOST RECENT WA. STATE APPROVAL LISTING.
- 3. THE DISTRICT WILL PROVIDE INSPECTION AND INITIAL TEST OF THE BACKFLOW DEVICE PRIOR TO ESTABLISHMENT OF WATER SERVICE. SUBSEQUENT TESTING ON THE BACKFLOW DEVICE REQUIRED BY THE OWNER ANNUALLY.
- 4. SCHEDULE THOROUGH FLUSH OF THE SERVICE PRIOR TO CONNECTION OF THE BACKFLOW DEVICE.



**Woodinville
Water District**

**2.5" AND LARGER DOUBLE
CHECK VALVE ASSEMBLY**



**WATER STD.
PLAN NO. 22**

REVISION DATE
12-20