

NOTES:

PLAN

1. APPROVED DOUBLE CHECK VALVE ASSEMBLY TO BE INSTALLED HORIZONTAL WITH THE GROUND.
2. DESIGNED FOR BACK SIPHONAGE, BACK PRESSURE AND LOW HEALTH HAZARDS.
3. TEST COCKS TO FACE OUTWARDS OR UPWARDS FROM ASSEMBLY.
4. THE DCVA MAYBE INSTALLED BELOW GROUND PROVIDED ALL OF THE CLEARANCES ARE MET.
5. DO NOT INSTALL IN AN AREA SUBJECT TO FLOODING.
6. DCVA MUST BE ACCESSIBLE.
7. DCVA MUST BE PROTECTED FROM FREEZING CONDITIONS. FORM FIT 2" BELOW GRADE QUALITY STYROFOAM BELOW LID.
8. THE BACKFLOW ASSEMBLY MUST BE A WA. STATE APPROVED MODEL.
9. DCVA MUST BE TESTED AFTER INSTALLATION AND YEARLY THEREAFTER BY A WA. STATE CERTIFIED BACKFLOW ASSEMBLY TESTER.
10. TEST RESULTS SHALL BE SENT TO WOODINVILLE WATER DISTRICT.
11. FLUSH LINES PRIOR TO INSTALLATION OF BACKFLOW PREVENTER.
12. SUPPORTS REQUIRED ON 2" AND LARGER DCVA ASSEMBLIES.
13. COVER & TYPE OF PIPE FOR FIRELINES SHALL BE AS REQUIRED BY THE JURISDICTIONAL FIRE AUTHORITY.

WATER BOX REQUIREMENTS	
DCVA SIZE	OLD CASTLE ENCLOSURE NO.
1"	1324BCF W/ DI LID
1.5"	1527BCF W/ DI LID
2"	1730BCF W/ DI LID

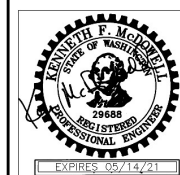
NOTES

1. CLEARANCES SHOWN ABOVE MUST BE MET OR BOX WILL NEED TO BE UP-SIZED.
2. BOXES & LIDS SHALL BE EQUIPPED WITH THE BOLT DOWN FEATURE. DO NOT INSTALL READER FLAP.



**Woodinville
Water District**

**DOUBLE CHECK VALVE
ASSEMBLY 2" AND SMALLER**



**WATER STD.
PLAN NO. (21)**

REVISION DATE
12-20