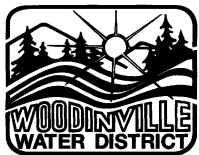


### MATERIAL LIST FOR 3" AND 4" METER

- |   |  |
|---|--|
| <ol style="list-style-type: none"> <li>1. 4"x3" G.V., FLxFL</li> <li>2. 4"x3" REDUCER, MJxMJ (INSTALL FOR 3")</li> <li>3. BADGER PLATE STRAINER</li> <li>4. METER IDLER-PROVIDED BY DISTRICT<br/>SEE NOTES 4 &amp; 5</li> <li>5. FLxPE SPOOL (LENGTH TO FIT)</li> <li>6. FLxPE SPOOL</li> <li>7. EBBA IRON SERIES 2100 MEG-A-FLANGE</li> <li>8. FORD 202BS OR APPROVED EQUAL 1.5" SADDLE</li> <li>9. 1.5" BALL VALVE W/ LOCK CAP (MIPxFIP) FOR<br/>B81-666-W OR APPROVED EQUAL</li> <li>10. 1.5"x90° BEND W/ I.P. THREADS</li> <li>11. 1.5" BRASS PIPING</li> <li>12. 1.5" BRASS UNION</li> </ol> | <ol style="list-style-type: none"> <li>13. UTILITY VAULT 44840LA W/ DUAL LOCKING STEEL<br/>COVERS 4484-TL-2-332P W/ RECESSED<br/>PADLOCK HASP OR APPROVED EQUAL. CONTRACTOR<br/>SHALL VERIFY INTERIOR VAULT DIMENSIONS WILL<br/>ACCOMMODATE ACTUAL MATERIALS USED. DRILL 1 7/8"<br/>FOR AMR IN LID AT LOCATION DESIGNATED BY THE<br/>DISTRICT.</li> <li>14. 2'x2'x8" THICK FORMED CONCRETE BLOCKING WITH<br/>LOCKING FOLLOWER RING.</li> <li>15. ADJUSTABLE PIPE SUPPORT</li> <li>16. ACCESS LADDER</li> <li>17. PIPE BRACKET</li> <li>18. PROVIDE 12" DEEP SUMP FOR PUMP IF GRAVITY DRAIN<br/>UNAVAILABLE. GRAVITY DRAINS SHALL HAVE A SUMP<br/>SCREEN.</li> <li>19. PROVIDE SUMP PUMP IF GRAVITY DRAIN UNAVAILABLE.</li> </ol> |
|---|--|

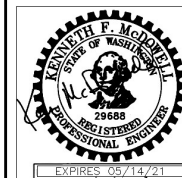
#### NOTES:

1. VAULT LOCATION SHOWN IS IN A LANDSCAPED OR UNIMPROVED AREA. INSTALLATION IN ASPHALT AREAS WILL NOT BE ALLOWED WITHOUT DISTRICT APPROVAL.
2. ALL MJ JOINTS SHALL BE MEG-A-LUGED.
3. INSTALL SUMP PUMP WITH ELECTRIC SERVICE AND DISCHARGE PIPING AS SHOWN IN STANDARD DETAIL 25 (FIRE SPRINKLER SERVICE CONNECTION) IF GRAVITY DRAIN UNAVAILABLE.
4. 60 DAY LEAD TIME NEEDED TO ORDER A 3" AND LARGER METER.
5. AFTER BOARD ACCEPTANCE, THE DEVELOPER CONTRACTOR SHALL PICK UP THE METER AT THE DISTRICT TO INSTALL IT.
6. CLEAN ALL CONSTRUCTION DEBRIS FROM THE VAULT FLOOR, WALLS, LID AND INSTALLED MATERIALS.



**Woodinville  
Water District**

**3" AND 4" WATER  
METER INSTALLATIONS**



**WATER STD.  
PLAN NO. 18**

**REVISION DATE  
12-20**