

SURFACE RESTORATION IN ACCORDANCE WITH LOCAL JURISDICTIONAL REQUIREMENTS. MINIMUM REQUIREMENTS SHOWN IN TRENCH PAVEMENT & SURFACE RESTORATION DETAIL NO. 10.

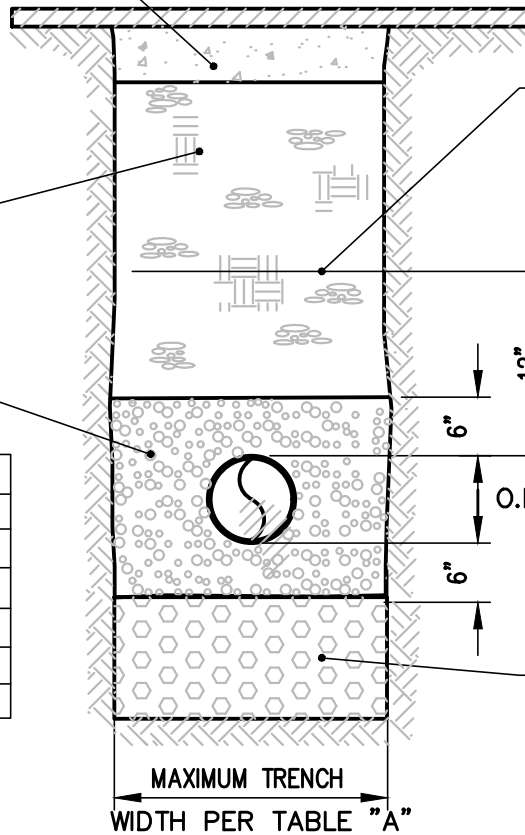
6.5" OF 5/8" CRUSHED GRAVEL (MIN.) REQUIRED IN HARD SURFACED AREAS. COMPACT TO 95% MAX. DENSITY. LOCAL JURISDICTIONAL REQUIREMENTS SHALL OVERRIDE.

SELECT NATIVE MATERIAL OR IMPORTED GRAVEL. COMPACT TO MIN. 95% MAX. DENSITY. SEE SPECIFICATIONS.

BEDDING GRAVEL - SEE NOTE 3

TABLE "A"

6" PIPE	2'-6"
8" PIPE	2'-6"
10" PIPE	3'-0"
12" PIPE	3'-0"
15",16" PIPE	3'-6"
18" PIPE	4'-0"
24" PIPE	4'-0"



SPECIAL PRECAUTIONS SHALL BE TAKEN TO PROTECT PIPE TO THIS LEVEL. SEE SPECIFICATIONS FOR MAXIMUM PARTICLE SIZE.

O.D. OF SEWER MAIN

FOUNDATION GRAVEL (PER SPECIFICATIONS) AS REQUIRED BY THE ENGINEER

TRENCH SECTION

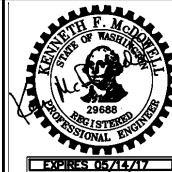
NOTES:

1. LOCAL JURISDICTIONAL REQUIREMENTS OVERRIDE ALL APPLICABLE SECTIONS OF THIS DETAIL. WHEN WORKING IN A STREET R/W PLEASE REFER TO ALL LOCAL JURISDICTIONAL REQUIREMENTS FOR TRENCH EXCAVATION AND BACKFILL.
2. FILL AREAS SHALL BE FILLED AND COMPACTED PRIOR TO INSTALLATION OF WATER MAINS. 95% COMPACTION PER ASTM D-1557 REQUIRED IN FILL AREAS. REPORTS REQUIRED PRIOR TO TRENCHING.
3. BEDDING SHALL BE PEA GRAVEL OR 5/8" MINUS CRUSHED SURFACING. TRENCH DAMS (PER THE STANDARD PLANS) SHALL BE INSTALLED IN WET AREAS AS DIRECTED BY THE ENGINEER.
4. PUMPING SOILS SHALL BE REMOVED FROM THE TRENCH BACKFILL IMMEDIATELY.
5. USE OF NATIVE SOILS FOR BACKFILL REQUIRES PROCTOR SAMPLES BE TAKEN PRIOR TO EXCAVATION AND COMPACTION TEST RESULTS SUBMITTED DAILY. BACKFILL SHALL BE REMOVED AND RECOMPACTED OR REPLACED UNTIL PASSING TEST RESULTS ARE OBTAINED.



**Woodinville  
Water District**

**TYPICAL  
LONGITUDINAL  
TRENCH SECTION**



SEWER STD.  
PLAN NO. (8)

REVISION DATE  
12-11