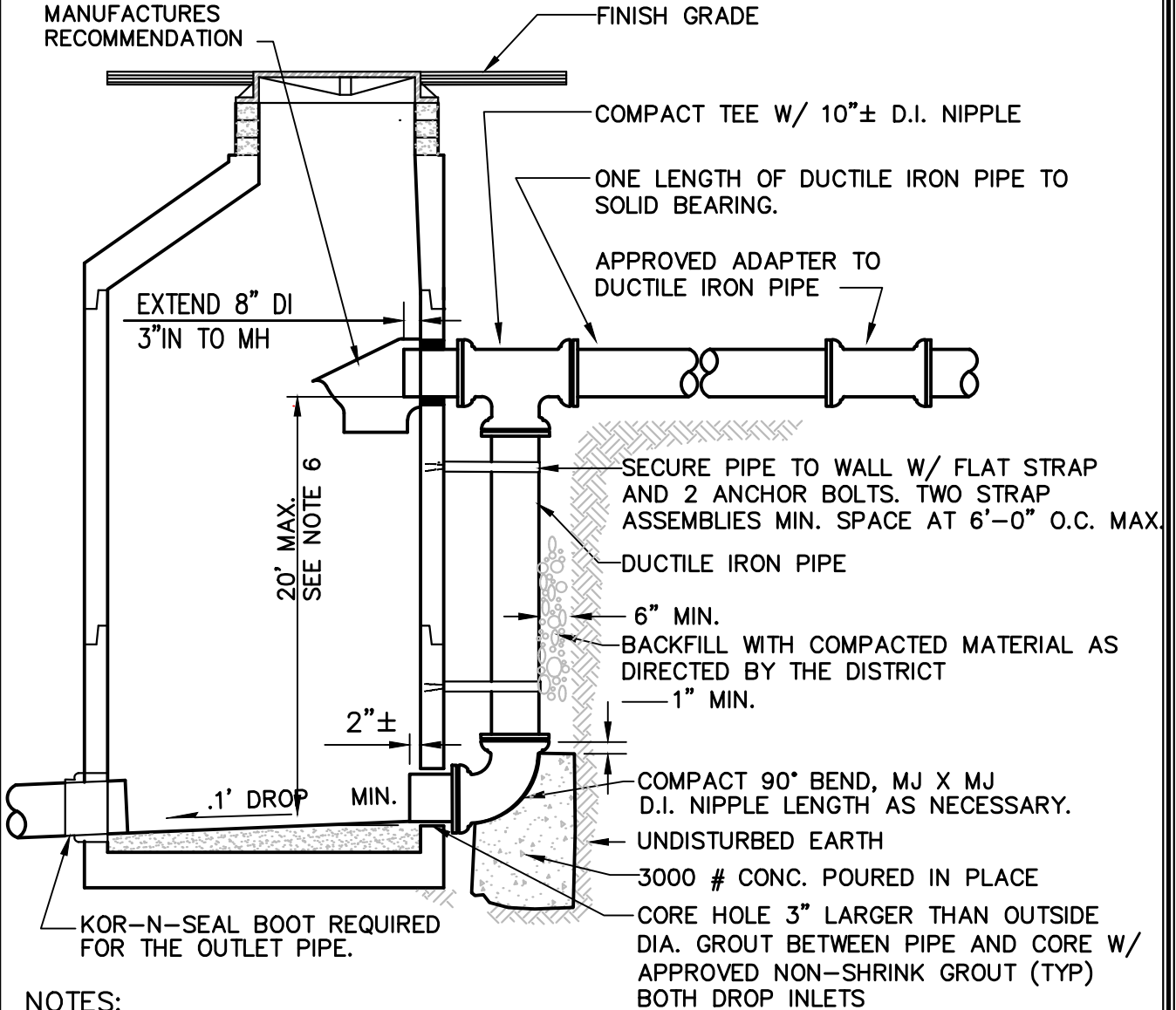


RELINER INSIDE DROP BOWL  
MODEL A-6.  
ATTACH TO MH WALL PER  
MANUFACTURERS  
RECOMMENDATION



**NOTES:**

1. ALL APPLICABLE DETAILS FROM STANDARD PLAN NO. 2 APPLY TO DROP MH.
2. WHEN POSSIBLE, LOCATE STEPS AND LADDER APPROX 1' FROM DROP INLETS..
3. ALL MJ JOINTS SHALL BE MEG-ALUG OR EQUAL.
4. CORED HOLE FOR DROP SHALL BE A MINIMUM OF 6" (EDGE TO EDGE) FROM A RISER SEAM.
5. DETAIL FOR 8" DIAMETER ONLY. OTHER SIZES BY DISTRICT APPROVAL ONLY.
6. MANHOLES DEEPER THAN 20' SHALL BE CONSTRUCTED PER THE REQUIREMENTS FOR DEEP MANHOLE STANDARD PLAN 5A. SUBMITTAL SKETCH OF PLATFORM AND DROP LOCATION REQUIRED.



**Woodinville  
Water District**

**8" OUTSIDE DROP MANHOLE  
INSTALLATION**



**SEWER STD.  
PLAN NO. 6**

REVISION DATE  
3-18