

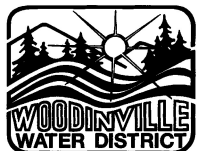
MATERIAL LISTING

- | | |
|--|---|
| 1. OLDCASTLE VAULT 612LA | 20. NOT USED |
| 2. LW PRODUCTS, 30" SQUARE MIN. OR AS SHOWN ON DWG. (DWG. GOVERNS) | 21. 4" SPOOL (PExPE) LENGTH AS REQUIRED |
| 3. STAINLESS STEEL OR ALUMINUM LADDER W/ "LADDER UP" (SEE DETAIL STD PLAN 26B) | 22. 4" 90° BEND (MJxMJ) |
| 4. NOT USED | 23. 4" RESTRAINED FLANGED COUPLING ADAPTER (RFCA) |
| 5. 6" SPOOL (FLxPE) LENGTH AS REQUIRED | 24. 4"x2" REDUCER (FL) |
| 6. 6" H STYLE STRAINER (FLxFL) CLA-VAL X43H | 25. 2" REDUCED PORT PRESSURE REDUCING VALVE (FLxFL) MODEL NO. 690G-01 BCSYKCx101 W/ STAINLESS TRIM. SPRINGS RATING OF 20-105 PSI. |
| 7. 6" SPOOL x 18" LONG (FLxFL) | 26. 4"x2" LONG SPOOL (FLxFL) |
| 8. 6" GATE VALVE W/ HAND WHEEL (FLxFL) | 27. 4" 90° BEND (MJxMJ) |
| 9. 6" PRESSURE REDUCING VALVE (FLxFL) MODEL NO. 90G-01 BCSYKCX101 W/ STAINLESS TRIM & COVER BOLTS. SPRINGS RATING OF 20-105 PSI | 28. REMOVABLE SUMP DRAIN (W/ 1: LIP) |
| 10. 6" RESTRAINED FLANGE COUPLING ADAPTER (RFCA) | 29. 3/4" ROMAC 101S SADDLE, 3/4" BALL CORP STOP W/ HOSE BIB. |
| 11. ADJUSTABLE PIPE SUPPORT | 30. 3D PRESSURE GAUGE 0-200 PSI INSTALLED ON 3/4" ROMAC 101S SADDLE W/ 1/4" BALL VALVE. |
| 12. 4" D.I. (RJ) EXTEND TO DRAINAGE COURSE PER PLAN OR AS DIRECTED. INSTALL BENDS (RJ) AS NEEDED. | 31. 4" CAP MJ - MEG-A-LUG W/ 3" TAP |
| 13. 4" REDUCED PORT PRESSURE RELEASE VALVE MODEL NO. 650G-01BSKC/x101/STAINLESS TRIM AND COVER BOLTS. SPRINGS RATING OF 20-105 PSI | 32. GALVANIZED GRATING (2 PIECES) |
| 14. 4" GATE VALVE W/ WHEEL (FLxFL) | 33. 4" H STYLE STRAINER (FLxFL) CLA-VAL X43H |
| 15. 3D PRESSURE GAUGE 0-100 PSI INSTALLED ON 3/4" ROMAC 101S SADDLE W/ 1/4" BALL VALVE. | 34. 2'x2'x8" THICK FORMED CONCRETE BLOCKING WITH LOCKING FOLLOWER RING |
| 16. 6"x4" TEE (FLxFL) | 35. 4" TEE, FL 2/ TAPPED BLIND FLANGE |
| 17. 6"x4" TEE (MJxMJ) | 36. 1/2" AIR RELEASE APCO#55 |
| 18. NOT USED | 37. NOT USED |
| 19. 4" SPOOL (FLxPE) LENGTH AS REQUIRED | 38. ADAPTER (FLxMJ) |
| | 39. MAINLINE DIA. TEE (FL) OR FLxMJ AND GATE VALVE (FLxMJ) |
| | 40. ZONE VALVE - NORMALLY CLOSED |
| | 41. AIR VAC ASSEMBLY PER STD. PLAN 11 (TEE FL) |
| | 42. 2" BLOW-OFF PER STD. PLAN 12 (TEE MJxFL) |

NOTES:

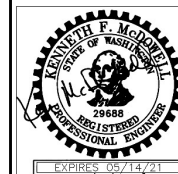
- THIS IS A GENERIC MATERIAL LIST. FITTINGS, VALVE SIZES, AND VALVE TYPES MAY DIFFER AND ARE SHOWN ON THE PLANS.
- ALL MECHANICAL JOINT FITTINGS (IN OR OUT OF THE VAULT) SHALL BE MEG-A-LUGGED.
- SUMP PUMP REQUIRED. GRAVITY DRAIN ONLY ALLOWED WITH SPECIAL PERMISSION FROM THE DISTRICT.
- VAULT OPENINGS SHALL BE CORED. CORED OPENINGS SHALL BE SIZED TO ACCOMMODATE LINK SEAL. LINK SEAL SHALL BE GROUTED INSIDE AND OUT WITH AN APPROVED TRAFFIC RATED NON-SHRINK GROUT.
- EXTERIOR VAULT JOINTS SHALL BE SEALED WITH 6" WIDE W/ RAPID SEAL BY CANUSA-CPS OR NPC EXTERNAL JOINT WRAP BY TRELLEBORG ENGINEERING SYSTEMS IN WET AREAS.
- WATERLINE SHALL BE RESTRAINED (MIN.) 50' UPSTREAM AND 40' DOWNSTREAM OF VAULT.
- STAINLESS STEEL BOLTS W/ SILICON BRONZE NUTS SHALL BE USED ON ALL FLANGED FITTINGS.
- ELECTRICAL SERVICE SHALL BE PROVIDED. SEE STANDARD SPECIFICATIONS FOR REQUIREMENTS.
- CONTRACTOR RESPONSIBLE TO SET VAULT SO TOP SLAB IS MIN. 12" LOWER THAN ADJACENT OR FUTURE ROADS TO ACCOMMODATE WIDENING OR PAVING WITHOUT CONFLICT.
- INSTALL PILOT CONTROL PACKAGE TOWARDS INSIDE OF VAULT ON 6" AND 2" PRV.

SHEET 3 OF 3



**Woodinville
Water District**

**PRESSURE REDUCING
VALVE STATION**



**WATER STD.
PLAN NO. 26C**

REVISION DATE
12-20