

SURFACE RESTORATION IN ACCORDANCE WITH LOCAL JURISDICTIONAL REQUIREMENTS. MINIMUM REQUIREMENTS SHOWN IN TRENCH PAVEMENT & SURFACE RESTORATION DETAIL NO. 10.

6.5" OF  $\frac{5}{8}$ " CRUSHED GRAVEL (MIN.) REQUIRED IN HARD SURFACED AREAS. COMPACT TO 95% MAX. DENSITY. LOCAL JURISDICTION REQUIREMENTS SHALL OVERRIDE.

SELECT NATIVE MATERIAL OR IMPORTED GRAVEL. COMPACT TO MIN. 95% MAX. DENSITY. SEE WWD SEWER CONSTRUCTION SPECIFICATION CS-1.

BEDDING GRAVEL - SEE NOTE 3

SPECIAL PRECAUTIONS SHALL BE TAKEN TO PROTECT PIPE TO THIS LEVEL. SEE SPECIFICATIONS FOR MAXIMUM PARTICLE SIZE.

O.D. OF SEWER MAIN

FOUNDATION GRAVEL (PER SPECIFICATIONS) AS REQUIRED BY THE ENGINEER

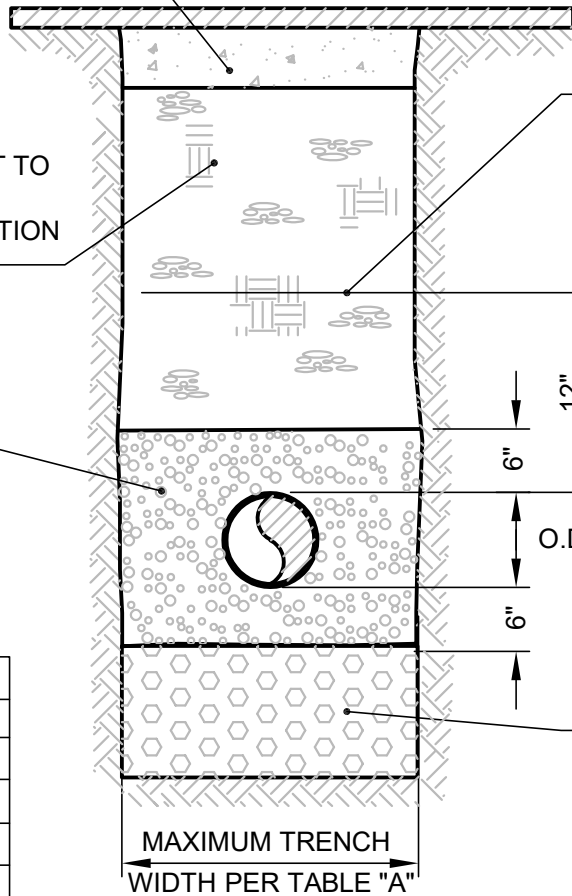


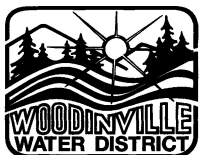
TABLE "A"

6" PIPE	2'-6"
8" PIPE	2'-6"
10" PIPE	3'-0"
12" PIPE	3'-0"
15", 16" PIPE	3'-6"
18" PIPE	4'-0"
24" PIPE	4'-0"

TRENCH SECTION

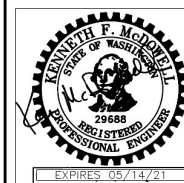
**NOTES:**

1. LOCAL JURISDICTIONAL REQUIREMENTS OVERRIDE ALL APPLICABLE SECTIONS OF THIS DETAIL. WHEN WORKING IN A STREET RIGHT OF WAY REFER TO ALL LOCAL JURISDICTIONAL REQUIREMENTS FOR TRENCH EXCAVATION AND BACKFILL.
2. FILL AREAS SHALL BE FILLED AND COMPACTED PRIOR TO INSTALLATION OF WATER MAINS. 95% COMPACTION PER ASTM D-1557 REQUIRED IN FILL AREAS. REPORTS REQUIRED PRIOR TO TRENCHING.
3. BEDDING SHALL BE PEA GRAVEL OR  $\frac{5}{8}$ " MINUS CRUSHED SURFACING. TRENCH DAMS (PER THE STANDARD PLANS) SHALL BE INSTALLED IN WET AREAS AS DIRECTED BY THE ENGINEER.
4. PUMPING SOILS SHALL BE REMOVED FROM THE TRENCH BACKFILL IMMEDIATELY.



**Woodinville  
Water District**

**TYPICAL  
TRANSVERSE  
TRENCH SECTION**



**SEWER STD.  
PLAN NO. (8A)**

REVISION DATE  
12-20